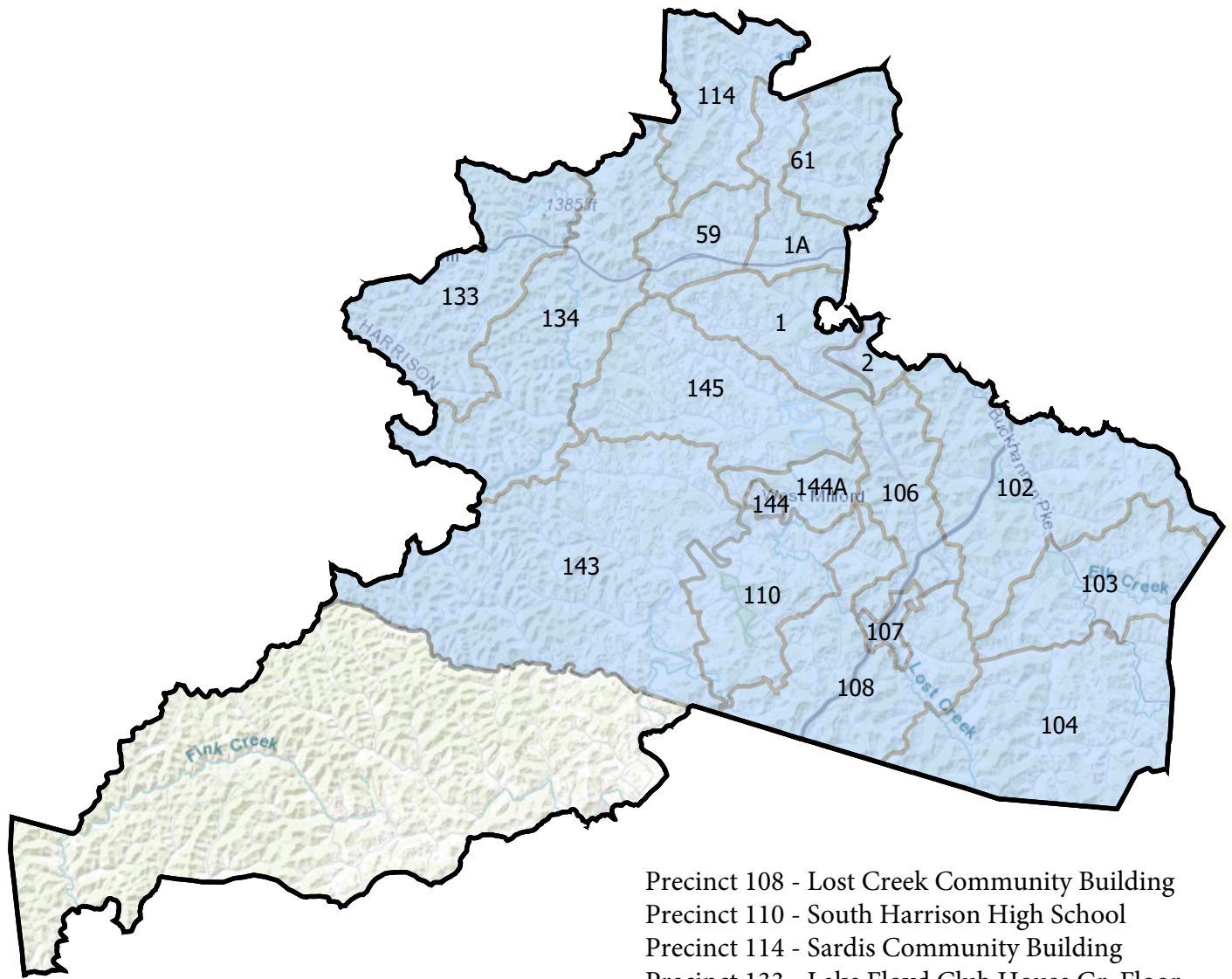




House of Delegate District - 69



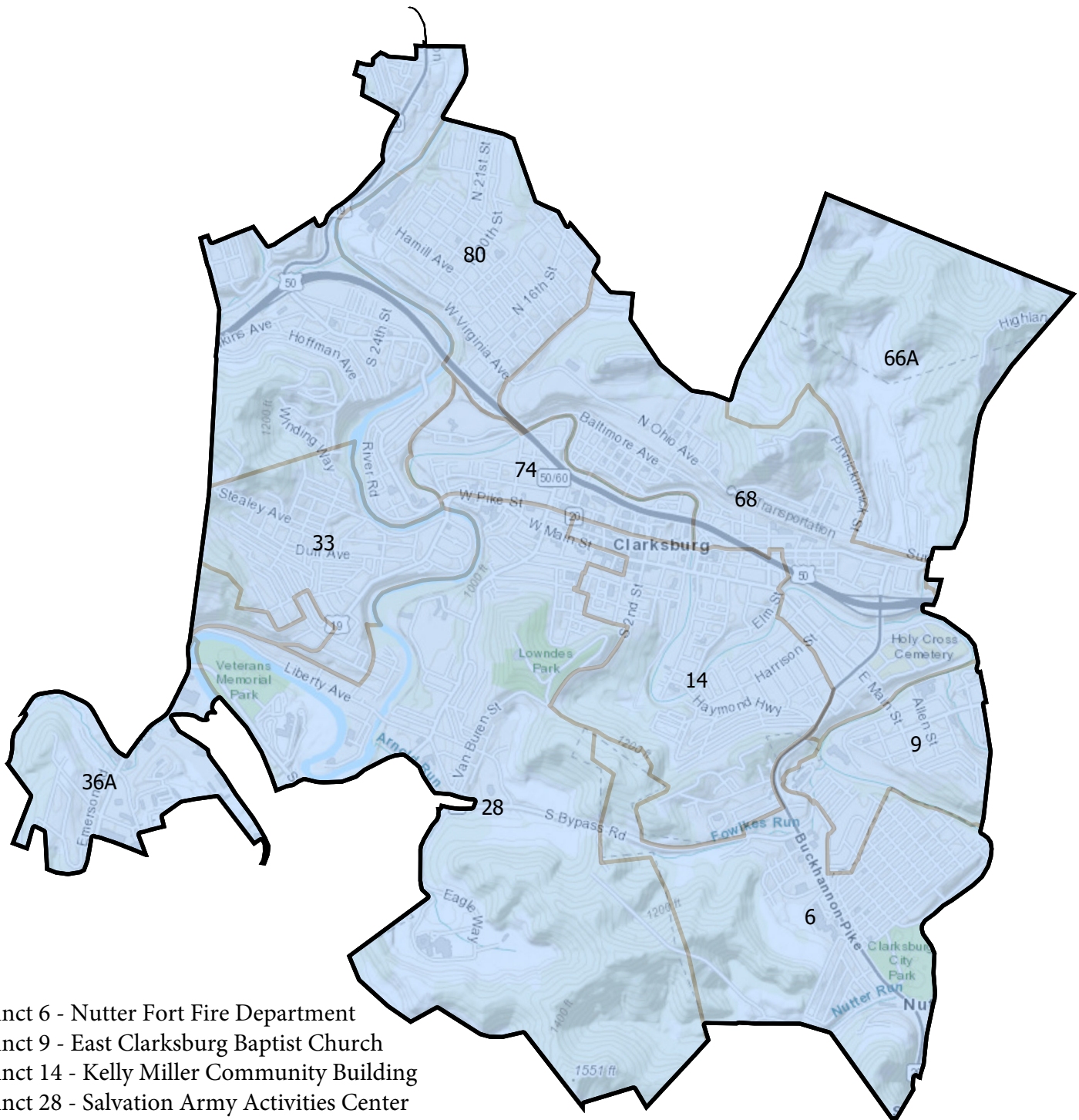
- Precinct 1 - HC Recreational Complex & 4-Center
- Precinct 1A - HC Recreational Complex & 4-H Center
- Precinct 2 - Mt. Clare Volunteer Fire Dept.
- Precinct 59 - Reynoldsville New Hope Christian Church
- Precinct 61 - United Technical Center
- Precinct 102 - Quiet Dell Methodist Church
- Precinct 103 - Monroe Chapel
- Precinct 104 - Johnstown Community Center
- Precinct 106 - Mt. Clare United Methodist Church
- Precinct 107 - Lost Creek Community Building

- Precinct 108 - Lost Creek Community Building
- Precinct 110 - South Harrison High School
- Precinct 114 - Sardis Community Building
- Precinct 133 - Lake Floyd Club House Gr. Floor
- Precinct 134 - Coplin United Methodist Church
- Precinct 143 - New Bethel Methodist Church
- Precinct 144 - West Milford Community Center
- Precinct 144A - West Milford Community Center
- Precinct 145 - Sycamore United Methodist Church

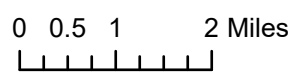




House of Delegate District - 70



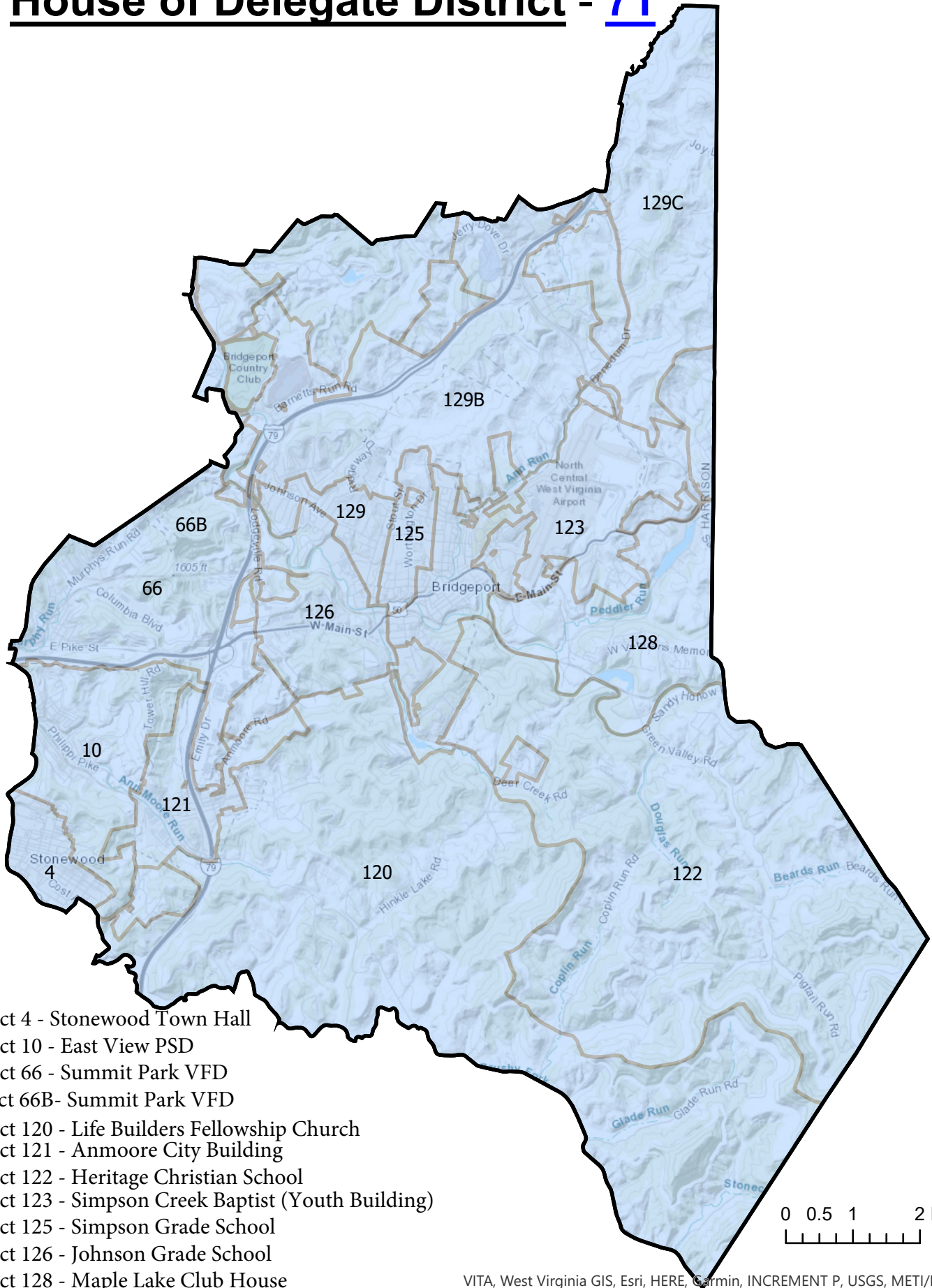
- Precinct 6 - Nutter Fort Fire Department
- Precinct 9 - East Clarksburg Baptist Church
- Precinct 14 - Kelly Miller Community Building
- Precinct 28 - Salvation Army Activities Center
- Precinct 33 - Duff St. Methodist Church ED Building
- Precinct 36A - Rose Bud Plaza
- Precinct 66A - Summit Park VFD
- Precinct 68 - Knights of Columbus
- Precinct 74 - United Methodist Temple
- Precinct 80 - St. James School Gym



VITA, West Virginia GIS, Esri, HERE, Garmin, INCREMENT P, Intermap, USGS, METI/NASA, EPA, USDA



House of Delegate District - 71



- Precinct 4 - Stonewood Town Hall
- Precinct 10 - East View PSD
- Precinct 66 - Summit Park VFD
- Precinct 66B- Summit Park VFD
- Precinct 120 - Life Builders Fellowship Church
- Precinct 121 - Anmoore City Building
- Precinct 122 - Heritage Christian School
- Precinct 123 - Simpson Creek Baptist (Youth Building)
- Precinct 125 - Simpson Grade School
- Precinct 126 - Johnson Grade School
- Precinct 128 - Maple Lake Club House
- Precinct 129 - Bridgeport High Cafeteria
- Precinct 129B - Bridgeport High Cafeteria
- Precinct 129C - Johnson Grade School

VITA, West Virginia GIS, Esri, HERE, Garmin, INCREMENT P, USGS, METI/NASA, EPA, USDA



House of Delegate District - 72

- Precinct 43 - Coons Run Baptist Church
- Precinct 44 - Owings Baptist Church
- Precinct 45 - Saltwell Road Church
- Precinct 46 - Lincoln High School
- Precinct 48 - Big Elm Elementary
- Precinct 50 - St. Ann's Parish Hall
- Precinct 51 - Womens Club House
- Precinct 52 - Lincoln High School
- Precinct 53 - Otterbein United Methodist Church
- Precinct 63 - Spelter Fire Department
- Precinct 87 - Christian Apostolic Church
- Precinct 92 - Lumberport Community Center
- Precinct 95 - Ten Mile Baptist Church
- Precinct 96 - Lumberport Baptist Church
- Precinct 98 - Big Elm Elementary
- Precinct 114A - Sardis Community Building
- Precinct 118 - Wallace United Methodist Church
- Precinct 130 - Salem United Methodist Church
- Precinct 132 - Seventh Day Baptist Church
- Precinct 135 - Marshville Community Center
- Precinct 136 - Van Horn Annex Building
- Precinct 137 - Van Horn Annex Building

